

Autumn / Winter Edition 2021



Cobalt

Medical Charity
Diagnosis • Research • Education

COBALT NEWS

GIVE

**to support the
latest technology
diagnosing cancer
and dementia.**

Leading edge PET/CT
scanner planned for
Gloucestershire,
Herefordshire and
Worcestershire



Registered Charity Number: 1090790

TURNING SUPPORT



into innovative technology

Cobalt is a medical charity that works in partnership with the NHS to improve the lives of people affected by disease, including cancer and dementia. We do this by providing the best possible patient care using state-of-the-art imaging technology including MRI (Magnetic Resonance Imaging), CT (Computerised Tomography) and PET/CT (Positron Emission Tomography / Computerised Tomography) scanners. The Charity also participates in and funds research relating to the early diagnosis and treatment of cancer and dementia.

With help from our supporters, we were able to scan over 110,000 patients last year, helping the NHS shorten the diagnostic pathway.

WAYS TO GIVE

• **Online** - You can donate through our website, please go to <https://www.cobalthhealth.co.uk> and click the green donate button

- **Telephone** - You can make a card donation over the telephone by calling the fundraising team.
- **Post** - You can send a cheque or CAF cheque. Please make cheques payable to Cobalt and post to Linton House, Thirlestaine Road, Cheltenham GL53 7AS.
- **Text** - You can text COBALT 3 to 70085 to donate £3. This costs £3, plus one standard rate message.
- **Bank transfer** - You can donate directly through your online banking app, please call for our bank details.
- **Regular gift** - You can set up a regular gift, please call the fundraising team.
- **Tribute Fund** - You, your family and friends can make donates in memory of a loved one through a Tribute Fund in their name, please call for more information.
- **Gift in your Will** - You can leave a gift to Cobalt in your Will. For more information, you can speak directly to your solicitor or call the fundraising team.

Please call 01242 53 5922 to speak to a member of the Fundraising Team.

Donate today and make a difference

WELCOME



Medical imaging charity Cobalt has supported the NHS for over 50 years, providing very latest scanning technology and an important centre for research. Developing services not available within the NHS locally.

Over the past year Cobalt has supported NHS England during the COVID pandemic by providing a CT service to hospitals locally and nationally. This service, available up to 24 hours a day 7 days per week, has enabled the NHS to treat patients with the COVID virus and maintain an imaging service for other urgent cases. Many of those were cancer patients. Last year we saw an additional 35,000 patients.

The Charity has also worked in partnership with the NHS to provide lung cancer screening in some of the most deprived areas of the country. This enables the earlier diagnosis of lung cancer at a more treatable stage. We are very grateful to the Clive and Sylvia Richards Charity which has funded a number of CT scanners to help develop this service.

PET/CT scans are used to diagnose cancer and to see if it has spread to other areas

of the body (stage). PET/CT is also a very effective tool in supporting the diagnosis of dementia.

We are delighted to launch our new appeal to purchase the very latest digital PET/CT technology, which will support NHS patients throughout the Three Counties of Gloucestershire, Herefordshire and Worcestershire. The new digital PET/CT scanner will be one of only six digital scanners in the country. This will enable patients to be seen quickly, and with short scan times, we can see more patients every day. All of this improves the patient experience and, with very high quality images, improves the diagnostic capability. The increased capacity this new technology will give us will enable the charity to support more research and clinical trials.

This sophisticated technology is expensive and therefore we need your help to support the purchase. Every penny counts! Please donate today to our PET/CT Appeal to help ensure we can continue to provide the leading edge technology and support more patients. Please help us, help others.

Peter Sharpe
Chief Executive, Cobalt Health

WORLD LEADING TECHNOLOGY:

Siemens Biograph Vision digital PET/CT Scanner

We need to invest in the latest equipment to support an early and accurate diagnosis

Diagnostic imaging is an important part of the patient journey and as we know, demand is growing. Cancer Research UK now estimates that one in two people in the UK will be diagnosed with cancer at some point in their lives and 2.5 million people are living with cancer. Early diagnosis can help to improve long-term outcomes. Recognising a disease early means that patients can understand how their symptoms will change over time and how these can be treated.

What is PET/CT?

PET/CT scans are primarily used to diagnose cancer and to assess the spread of the cancer (stage). This enables the planning of the most effective treatment. They can also be used to diagnose some conditions that affect the normal workings of the brain such as dementia.

PET scanners work by detecting the radiation given off by a substance that is injected into the arm called a radiotracer as it collects in different parts of your body. In most PET scans a radiotracer called fluorodeoxyglucose (FDG) is used, which is similar to naturally occurring glucose (a type of

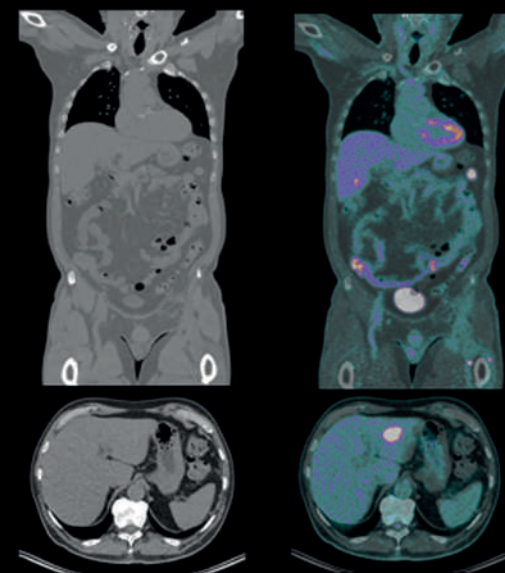
sugar) so your body treats it in a similar way. By analysing the areas where the radiotracer does and does not build up, it's possible to work out how certain body functions are working. For example, using FDG in the body's tissues can help identify cancerous cells because they use glucose at a much faster rate than normal cells.

A CT scan is also performed by the scanner which provides high quality anatomical images of the body. The PET/CT scanner then fuses these images together to provide 3D images showing both the function and anatomy of the body. The new PET/CT scanner can carry out a PET/CT scan in only 10 minutes.

"Cobalt provides the NHS PET/CT service for Gloucestershire, Herefordshire and Worcestershire, the Three Counties, supporting nearly 4,000 cancer patients each year.

Cobalt is in a unique position, working with a number of industry partners, to implement this new equipment and to further develop research, training, and education programmes."

**Professor Iain Lyburn,
Medical Director**



CT

PET/CT Fusion

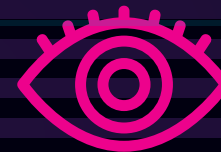
Images courtesy of UMCG, The Netherlands and Siemens Healthcare GmbH



**TOTAL COST £2M.
THE CHARITY NEEDS
TO RAISE £303K IN
DONATIONS TO HELP
COVER THE COST OF
THE EQUIPMENT.**

The new Siemens Vision Digital PET/CT scanner provides world leading technology:

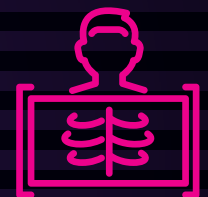
- Latest innovation - the equipment uses an ultra-dynamic range detector which enables doctors to identify the smallest lesions. The detector is the most important component of the PET/CT system as it defines the quality of the incoming patient data.
- Improved efficiency – the advanced technology reduces the scan times from 30 minutes to 13 minutes which will enable Cobalt to see more patients .
- Improved patient experience - to help improve diagnostic rates and reduce anxiety, the new Vision Digital PET/CT scanner has a large bore and short tunnel which enables a more comfortable patient experience. Patients are provided with comfortable environments supported by friendly and well-trained staff.



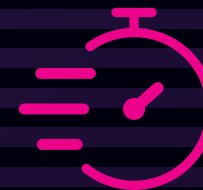
**CLARITY OF
IMAGES**



**HELPING
MORE PATIENTS**



**USING LATEST
INNOVATION**



**INCREASED
SPEED**



**ADVANCED
TECHNOLOGY**

INVESTING IN RESEARCH

Research using medical imaging is essential to understand more about disease and treatments. It plays an important role in discovering new treatments and assessing the efficacy of existing treatments. Research provides vital information which can progress medicine for the benefit of existing and future generations.

PET/CT supports a wide range of research and clinical trials. This research mainly focuses on the diagnosis and treatment of cancer and dementia. Cobalt is one of the largest centres in the UK using PET/CT in the diagnosis of early onset dementia for the NHS. As a result of this expertise, the Charity also support a number of clinical trials relating to the treatment of dementia using the very latest radiotracers. The Charity's support for research nurses also enables more patients to be recruited into clinical trials. The use of artificial intelligence in the diagnosis of cancer is also being evaluated using PET/CT.

Cobalt has invested in a Radiology Research Fellow, Dr Ayah Nawwar, who working with Professor Iain Lyburn, Cobalt's Medical Director, ensures that the latest research results are published in a timely manner in international medical journals.

The new Siemens Vision PET/CT will enable Cobalt to participate in and fund more research. The ability for the Vision to produce high resolution images with shorter scan times will provide more capacity for research. As one of only a handful of digital PET/CT in the UK, the high resolution images will make it easier to see small lesions, improving diagnostic accuracy.

'This new state-of-the-art PET/CT technology will help the radiologist provide an accurate diagnosis for many cancer patients' Dr Julie Searle, Consultant Radiologist Gloucestershire Hospitals NHS Foundation Trust

PATIENT FEEDBACK

Patients are at the heart of everything we do, we use feedback to continuously improve. Here are some recent comments we have received regarding our PET/CT service.

“I was a little bit apprehensive about having a scan as I didn't know what to expect, the staff were lovely they explained everything and put me at ease.” – VF

“I was very impressed with the whole set up. I could not believe how efficiently and quickly my scan was dealt with. Everyone was very pleasant and helpful.”

“Staff were so very welcoming. From the minute I arrived to leaving all staff were so professional, fantastic communication and so warm. Thank you wonderful team.” – CC

“Excellent standards throughout.” – MG

LITTLE BY LITTLE ADDS UP TO A LOT

Have you an idea for an event or an activity to help raise funds?
Please do get in touch, we will be happy to help and advise.

Ryan Fortey, Head Stylist, Head Kandy said "Sadly, everyone knows someone touched by cancer. I want to do my bit to raise vital funds for Cobalt. I believe in the incredible work that they do."

Jodie Sheppard said: "I decided to support Cobalt because early diagnosis has been so important for mum to start getting the treatment she needs. Anything that gives the chance of an earlier diagnosis will help folks across the county have a fighting chance".

Jenny Bailey 'I have been raising money for Cobalt for more than ten years to help support the important work they do.'

Clare Shearer 'When my nan died we decided to raise money in her memory for Cobalt, as I knew she had done a lot of fundraising for some of the original equipment.'

'We decided to leave a gift to Cobalt in our will because we thought "why wouldn't we?" If it goes towards saving even one person's life, it would be worth it. We are so lucky to have such up to date scanning equipment available to us locally that we need to ensure it is there for many years to come' Lyn and Ian from Cheltenham.

Used stamps - collecting stamps is a quick and easy way to support us. Save any postage stamps, old or new, from UK or abroad and we will be happy to recycle them for cash.

Collect for us - Can you adopt a collecting tin for your premises, organisation or society? This is a really important way of helping Cobalt and all that loose change raises vital funds.

Volunteer for us - whatever time you have to give, we can use it! We simply would not be able to run many of our events without the hours donated by our volunteers. The level of commitment is very flexible, whether it is once a week, once a month or on an ad hoc basis.

Foreign currency - we can also turn foreign coins into cash for the scanner too!



CAPTURE A MOMENT CALENDAR 2022



Cost £10 plus £1.59 p&p. Please send a cheque for the calendar or order online.

Over 450 entries were received for Cobalt's photography competition. Local professional photographer Sally Ryde, Head of the MRI Department, Karen Hacking Searle, Cobalt's TYA Nurse, Megan Wilsher and experienced photographers Kevin Pascoe and Martin Roberts formed the judging panel. Twelve winning entries plus the under 16's winner are showcased in this beautiful calendar of stunning nature images.

This would make a great gift for family and friends.

We are grateful to all those who supported the competition including, Light & Land Photography, The Royal Photographic Society, Amateur Photographer Magazine, Martin Parr Foundation, WallSpace, DS Colour Labs, T4 Cameras, Steve Russell Studios, Richard Olpin, Ken Skehan (Your Space), USS Audio Visual and Chapel Arts, Cheltenham.



**TEXT 'COBALT 3' TO 70085 TO DONATE
£3 FOR LIFE SAVING EQUIPMENT FOR
THE THREE COUNTIES.**

THIS COSTS £3, PLUS ONE STANDARD RATE MESSAGE.

Please keep in touch. For all the latest events please check our events listings
at <https://www.cobalthhealth.co.uk/support-us/events/>

Cobalt, Linton House, Thirlestaine Road,
Cheltenham, Gloucestershire, GL53 7AS.

Tel 01242 535922

www.cobalthhealth.co.uk

Registered Charity Number 1090790



Registered with
**FUNDRAISING
REGULATOR**



Cobalt
Medical Charity
Diagnosis • Research • Education