

Winter 2023



Cobalt

Medical Charity

Diagnosis • Research • Education

COBALT NEWS



COBALT PLEDGES THREE MORE YEARS' SUPPORT FOR TEENAGERS AND YOUNG ADULTS WITH CANCER

Megan Willsher, Cobalt's Teenagers and Young Adults with Cancer Nurse Specialist with Jakob, a young cancer patient

**REMEMBER A CHARITY
IN YOUR WILL**
Help the work live on...

Registered Charity Number: 1090790

ABOUT US

Cobalt Health (Cobalt) is a medical charity. We work in partnership with the NHS, to deliver improvements in the diagnosis and treatment of cancer, dementia and other conditions. We do this by providing the best possible patient care using state-of-the-art imaging technology; including Magnetic Resonance Imaging (MRI), Computerised Tomography (CT) and Positron Emission Tomography/Computerised Tomography (PET/CT) scanners. Cobalt also funds and participates in research, mainly within the fields of cancer and dementia.

OUR VISION

To pioneer innovation in medical imaging diagnosis by investing in equipment, integrated research and education, to improve outcomes for patients now and in the future.

COBALT AT A GLANCE

130,000 PATIENTS SCANNED

INCLUDING 50,000 LUNG CANCER SCREENING ULTRA-LOW DOSE CT SCANS

59 RESEARCH PROJECTS AND TRIALS SUPPORTED

12 CT SCANNERS **9** MRI SCANNERS **2** PET/CT SCANNERS

99.6% OF PATIENTS* SAID THEY WOULD RECOMMEND COBALT TO A FRIEND OR FAMILY MEMBER WHO NEEDED A SCAN

*Based on patient experience questionnaires from our Cheltenham Imaging Centre in 2021/22

WELCOME

Welcome to the Winter 2023 issue of Cobalt News.

Over the past year, Cobalt has continued to work with the NHS to increase the range of services we provide. Our dedicated team of radiographers and support staff have provided care to over 130,000 patients in the last 12 months. The demand for our services has now taken us as far north as Scotland, and south into Essex and Devon. We have also continued to invest in our people: we now employ over 160 people, and our team is further strengthened by over 200 volunteers.

Cobalt could not exist without the commitment of our staff, volunteers, and supporters. We are very grateful to the many individuals, organisations, and trusts who have kindly supported us and raised funds for our charitable activities. Their help and support are invaluable and have enabled us to purchase a new 1.5 Tesla mobile MRI scanner, as well as a new PET/CT scanner installed at our imaging centre in Cheltenham. This scanner is one of only a handful of its kind in the UK and the very latest in digital PET/CT technology. Its shorter scanning times enable us to perform more scans per day, reducing local waiting times for oncology patients. It has also enabled us to support more research and clinical trials, including

those assessing new drugs which are being developed to treat dementia.

Our charity supports NHS oncology patients with specialist scans that would otherwise not be available, and we deliver the PET/CT scanning service for patients across Gloucestershire, Herefordshire, and Worcestershire. We are thankful to everyone who has donated to support our funded scans for oncology patients, and our specialist nursing posts – which include local breast cancer research nurses, and Cobalt's Teenagers and Young Adults with Cancer Nurse Specialist. We also continue to partner with the NHS to provide ultra-low dose CT scanning in communities, to support the NHS 'Targeted Lung Health Check' programmes.

In 2024, Cobalt will celebrate 60 years of supporting the NHS. We will be running a series of events, remembering decades of significant achievement and looking to the future.

Julia

Julia Jenkins, Head of Fundraising.

☎ 01242 535922

✉ fundraising@cobalthhealth.co.uk

www.cobalthhealth.co.uk/support-us

COMMUNITY-BASED IMAGING



L-R Peter Sharpe, CEO - Cobalt, Oliver Brown, Managing Director - WH Bence Coachworks Ltd, Natasha Lee, Clinical Imaging Assistant - Cobalt (back), Rebecca Macaulay, CT Radiographer - Cobalt, and Jan Kennedy, MRI Mobile Superintendent Radiographer - Cobalt

Cobalt has been working with the NHS in Gloucestershire to provide imaging in the community since 1994. We are delighted to have launched a new CT and MRI Community Diagnostic Centre in the heart of Gloucester, in partnership with the NHS. It will form part of the Quayside Community Diagnostic Centre, which will be fully operational from January 2024. The facility went live in September 2023, making CT and MRI scans easily accessible for more patients. This new centre will also facilitate the training of radiography students.



Cobalt's CT and MRI units being craned into position in the heart of Gloucester, as part of the new Quayside Community Diagnostic Centre.

GENEROUS DONATION SET TO INCREASE PARTICIPATION IN RESEARCH TRIALS

The Pink Ribbon Foundation kindly donated £10,000 to Cobalt, to help increase opportunities for breast cancer patients to participate in research, and to contribute to fighting this disease.

Before 2020, the NHS Thirlestaine Breast Centre, a centre of excellence for breast cancer treatment, could not focus on breast cancer research due to a lack of resources. However, in 2020, Cobalt helped to expand research trials for breast cancer patients across Gloucestershire, by funding key research posts and providing access to our charity's state-of-the-art diagnostic scanning equipment.

Through participation in studies, this ongoing project aims to bring the very best healthcare to Gloucestershire and the globe. Significant progress has been made in attracting research trials, recruiting patients onto those trials, and developing a strong research team specialised in breast care. This project has already had some outstanding results in its early stages, and it will continue to contribute to the wider cancer research environment.



L-R: Matthew Wallis (Consultant Radiologist, Cambridge University Hospitals), Professor Iain Lyburn (Director of Clinical Research, Cobalt Health) and Nisha Sharma (Consultant Radiologist, Leeds Teaching Hospital) at the British Society of Breast Radiology.

SUPPORTING THE NEXT GENERATION OF RADIOGRAPHERS

Cobalt is passionate about promoting and developing the radiography workforce of the future. As part of this commitment, we are delighted to announce that we are sponsoring Eliza Osman on her journey to becoming a Radiographer. Eli is a Cobalt Radiographic Assistant, and in September 2023 began studying Diagnostic Radiography at the University of Gloucestershire whilst continuing to work for Cobalt. Eli will undertake her clinical placement at Cobalt's Cheltenham Imaging Centre.



Eliza Osman

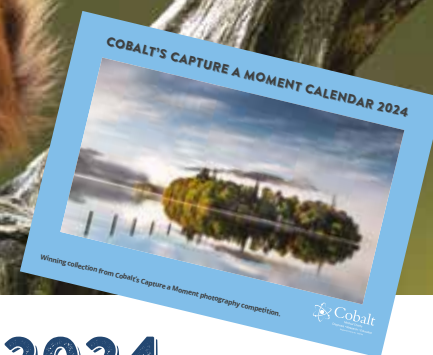
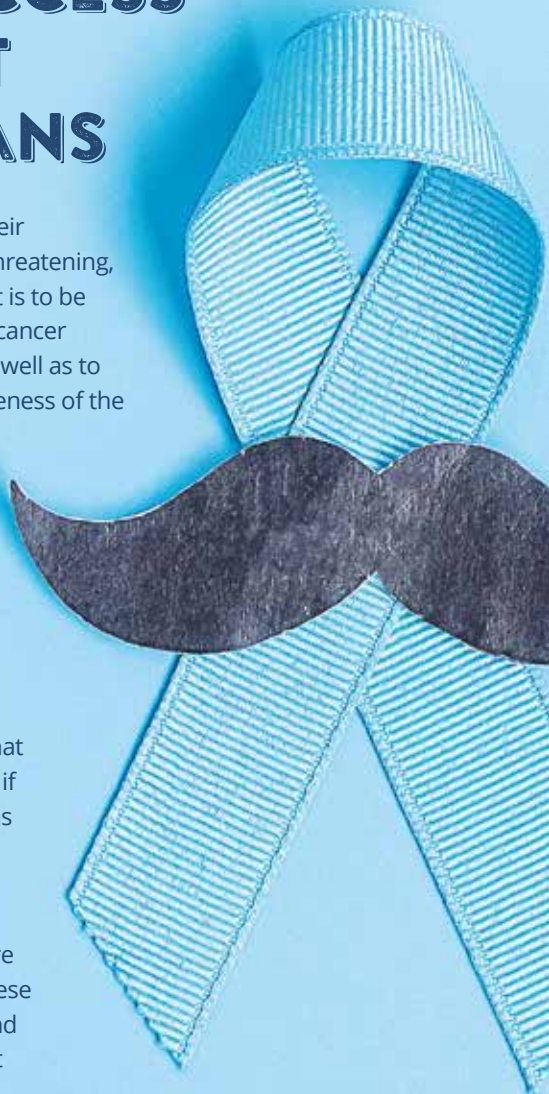
PROVIDING ACCESS TO SPECIALIST PROSTATE SCANS

1 in 8 men will get prostate cancer during their lifetimes. Prostate cancer is not always life-threatening, but the earlier it's identified the more likely it is to be cured. PET/CT scans can be used to identify cancer early and therefore start treatment early, as well as to assess the spread of cancer and the effectiveness of the treatment.

PET/CT uses a radioactive isotope to identify potential cancer cells. Our charity was the first PET/CT service in the UK to use a new imaging isotope (F18 PSMA) to identify the recurrence of prostate cancer. These types of scans are particularly useful for men who have been treated for prostate cancer and are in remission, to make sure that they are clear of the disease. They can show if the prostate cancer has recurred, and if it has spread to other parts of the body.

Cobalt provides the PET/CT scanning service for the NHS in Gloucestershire, Herefordshire and Worcestershire, however funding for these specialist prostate cancer scans is limited, and our charity is trying to raise funds to support additional patients.

If you can help, please call Cobalt's Fundraising office on 01242 535922.



OUR STUNNING 2024 CHARITY CALENDAR IS ON SALE NOW!

Each year we produce a beautiful calendar featuring the twelve winning entries of our Capture a Moment photography competition.

All proceeds from these calendars help to fund Cobalt's Teenagers and Young Adults with Cancer Nurse Specialist, Megan, and the amazing work that she does to support young patients throughout their cancer journeys.

The calendars make an ideal Christmas gift and cost just £12 including postage. Order yours while stocks last.

To purchase, please complete the response form at the back of this issue of Cobalt News, call 01242 535922 or pay online at www.cobalthhealth.co.uk/support-us.

Thank you to all the sponsors who helped make our 2023 photography competition a success, including The Royal Photographic Society, Wall Space, The Darkroom, Light & Land, Wex Video, David Broadbent Photography, Alan Ranger Photography, Digital Camera Magazine and University of Gloucestershire.

STAFF SPOTLIGHT

A CATCH UP WITH KAREN HACKLING-SEARLE, HEAD OF MRI

Karen manages Cobalt's MRI service, including the departments within the imaging centres, relocatable scanners and the mobile MRI fleet which supports the NHS at hospitals and in community settings. She celebrated 30 years of working at Cobalt earlier this year.



Karen at the recent Translational Research Symposium, at the University of Birmingham

Why did you choose radiography as a career?

What I wanted to do was forensic science, and it wasn't something I was able to pursue, so when I was at the careers office I saw information about a job role called 'radiographer', the more I looked into it the more interested I became. It meant you could look inside people's bodies, look at their anatomy and also see if there was any disease and it was something that I thought was of great interest.

What changes have you seen over the last 30 years?

So many! Technological advances in equipment and software are continuous. There are increasing magnet strengths and new scanning sequences that enable faster imaging and the ability to resolve pathology to such an extreme detail is absolutely amazing. There are also changes to the scanning environment, where we enhance the patient's experience so that patients are able to complete their scans with reduced anxiety.

What are the plans for the future?

There are lots of possibilities for imaging, new technologies can be utilised for wider screening programmes such as the lung health checks. I am hoping that sometime soon we may be able to provide cardiac MRI and CT scanning services and also participate in a wider screening programme for prostate cancer within the next 5 to 10 years.

How do you think AI (Artificial Intelligence) might affect MRI?

AI is already here and it is having a massive impact. It is important and it is only going to become more and more integrated. Radiology is a perfect discipline to benefit from the application of artificial intelligence including the ability to manipulate the data to reduce

scan times and the ability to manipulate the imaging so that you don't need as much data to build the picture. Reducing scanning time and improving image quality. AI can also augment workflows, particularly repetitive tasks, to help support radiologists with their reporting and pinpoint pathology enabling the radiologists to focus on particular areas.

What is your advice for someone wanting to work in this field?

I have had, and continue to have a wonderful career and feel very privileged to be in this role and am proud of the things that I have been able to do. At times healthcare can be challenging and the pressures can be great however that has been recognised and changes have been made to people's career pathways, enabling those that have left the profession to return to work for example and more options for diversification in careers which is attracting more people to the profession – this is really positive move and I wouldn't discourage anyone from being a radiographer.

How do you feel about being asked to be a judge for the Cobalt photography competition?

I was pleased, I enjoy photography, a lot of radiographers also do photography. This year we had an amazing amount of photos and a really diverse calendar is coming our way. My favourite picture is to the right. It reminds me of Minchinhampton Common where the photo was taken. I grew up in Stroud and walked around Minchinhampton Common nearly every weekend.



THE COBALT SCHOOL OF CLINICAL IMAGING – ONLINE AND AWAY!

Cobalt is committed to providing regular, free educational opportunities for medical professionals. Our online events cover a range of case-based musculoskeletal and oncology topics and enable us to reach a large number of medical professionals. We are delighted to be re-introducing an increasing number of face-to-face events, following the Covid pandemic. We recently took some of these talks on the road and presented to packed audiences at the UK Imaging and Oncology Congress in Liverpool.



Cobalt's MRI Training Facilitator, Sam Crosby, discussing 'Pedagogical approaches in supporting Trainee MRI Radiographers'.

CARING FOR TEENAGERS AND YOUNG ADULTS WITH CANCER

Every day throughout the UK, young people are told 'you have cancer'. Historically, young people in the 16-25 age group were neglected, as they are not seen as children nor adults. Each one of these young patients needs specialised nursing support and care to help them face their cancer journey.

Cobalt medical charity has provided funding for a Teenagers and Young Adults with Cancer Nurse Specialist, Megan Willsher, since 2011. We have made a further commitment to fundraise for this role until 2026, so that no young person across the three counties of Gloucestershire, Herefordshire and Worcestershire faces cancer alone.

"You only get one chance at being young, those few crucial years will shape the person you become – your relationships and career, your confidence and wellbeing, and your ability to pursue your dreams...cancer can throw all of that off track. Suddenly, your life has been turned upside down. You are scared and living from one appointment to the next."

– young cancer patient

Meet Megan, whose role it is to look after 16-25-year-olds diagnosed with cancer in the Three Counties.

Megan looks after around 35 young patients each year. She makes sure that they have support from the moment they are diagnosed, and cares for them through every step of their treatment, and for up to two years afterwards aiding their recovery and enabling them to live as full a life as possible.



This important post makes a world of difference to young people with cancer, delivering the best possible clinical care, support and advice. Megan's support also enables young people to engage with other patients; reducing feelings of isolation and being different. Megan has a wealth of experience in responding to the unique needs of teenagers and young adults. She also understands the impact diagnosis and treatment can have on emotions, friendships, studies, work, relationships, finances and fertility.

This post is part funded by Cobalt and the NHS, so that Megan can be available full time to support more patients.

"Since I was diagnosed, Meg has been with my family and me every step of the way. She has given extra support by coming along to doctors' appointments and helping me and my parents to understand everything that is going to happen.



She is always there if I have any questions or need help arranging meetings or getting in touch with other health professionals. It has made this whole process a lot less daunting knowing that she is there. I'm very grateful for all the help me and my family receive from her. Thank you." – young cancer patient

A message from Megan

"I think my role is quite unique, as it allows me to see patients in the clinical environment as well as in their own homes, which a lot of other nursing roles do not allow. That is one aspect of my job that I really do enjoy, getting out and about and seeing them in their own environment.

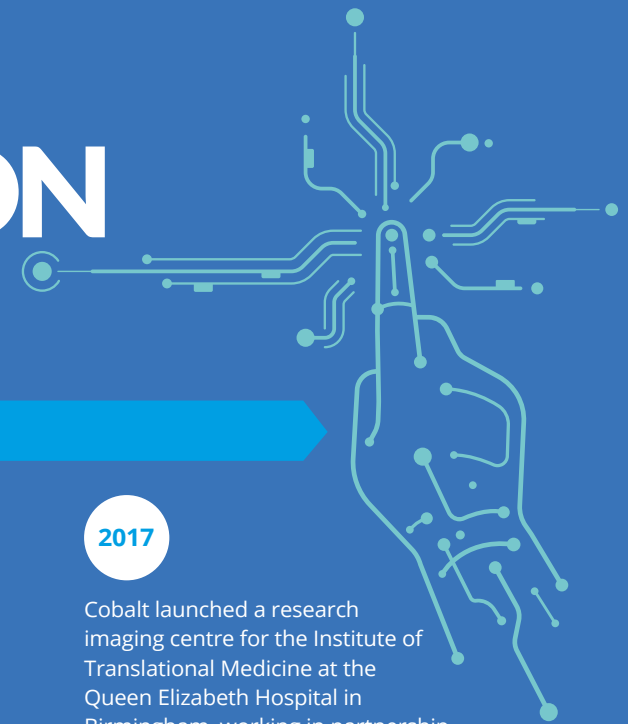
I have always worked with teenagers in my nursing career and really enjoy the challenges they bring, how positive they always are and how well they cope, even when faced with such difficult and challenging situations. They really are an inspiration and great fun to work with. Also, they tell it like it is!"

THE BIG GIVE IS BACK!! ONE DONATION, TWICE THE IMPACT!

For one week only, from midday Tuesday 28th November to midday Tuesday 5th December, donations to Cobalt made through thebiggive.org website will be DOUBLED using match funding. A donation of £45 with gift aid will become worth an amazing £101 to Cobalt!

The Christmas Challenge is the UK's biggest match-funded campaign. All money raised will be used to fund our specialist nurse for teenagers and young adults with cancer. Please pledge your support today and SAVE THE DATES. If you need any assistance or would like further information please give us a call on 01242 535922 and we will be happy to help. You can also find out more on our website. <https://www.cobalthhealth.co.uk/support-us/>

LOOKING BACK, 60 YEARS OF INNOVATION



Cobalt celebrates its 60th Anniversary in 2024. Here we look back on some key milestones through the decades:

1960's / 70's

1964

The 'Cobalt Unit Appeal Fund' was established by Dr Fred Hanna who was responsible for Radiotherapy in the County. He remained President of the Charity until 2009.



Dr. Fred Hanna OBE

1978

An appeal raised funds for an X-ray body scanner at the Oncology Centre, and buildings to house it. Opened by HRH Princess Anne.

1980's

1982

Cobalt established a new headquarters in Cheltenham, Linton House.

1982

Cobalt provided funding for a whole-body X-ray scanner for the diagnosis of cancer and other diseases at the Oncology Centre.

1989

The Gloucestershire breast screening service for women aged 50-64 was launched at Linton House.

The service was provided by the NHS, but supported by Cobalt through accommodation and equipment, including a mobile mammography unit.

1990's / 2000's

1996

Cobalt launched Europe's first high-field mobile MRI scanner.

2005

Building work began on a new imaging centre, Linton House Clinic in Cheltenham, funded by the Charity at a cost of £7m for construction and equipment.



2000's

2011

Cobalt launched an appeal to support the purchase of a £1m high-definition CT cardiac scanner for Cheltenham General Hospital.

2012

Digital mammography equipment was provided for Hereford County Hospital.

2015

Following a successful public appeal, a new PET/CT scanner was installed at Cobalt Imaging Centre in Cheltenham, to increase capacity for supporting oncology and dementia patients, and research studies.

2017

Cobalt launched a research imaging centre for the Institute of Translational Medicine at the Queen Elizabeth Hospital in Birmingham, working in partnership with the NHS.

2019

The first commissioned CT lung cancer screening service was launched, in partnership with the NHS in Manchester.



THANK YOU TO OUR SUPER SUPPORTERS

HENRY EARNS A DECENT CRUST

Henry Salvini is taking on the York Marathon to raise funds for his favourite charity. His hobby of bread baking is also helping him to raise funds. Henry hopes to raise £500, charging £3 per loaf.



Henry is a Student Nurse in his first year of study for a Master's degree in Adult Nursing at the University of Huddersfield. Prior to this, Henry worked as a Healthcare Assistant supporting one of Cobalt's MRI services in Birmingham, where he said the staff were supportive, helping him to build a portfolio for his university application. Henry said **"I had such an amazing time with Cobalt and met some fantastic radiographers, who worked with me to prepare for the university interviews and even celebrated with me when I got in! I am extremely grateful for an opportunity to raise some money for this wonderful charity."**

DYLAN DOES AN AMAZING THING

Following the death of his much-loved Grandad to cancer, a 7-year-old Dylan vowed to try to raise money for the Cobalt. He chose an ambitious plan to cycle 25 miles within one month and to try to raise £200. He and his dad planned the routes, and Dylan's mum designed a t-shirt for him to wear to advertise his efforts.



We are very proud of him. Dylan has currently raised an incredible £700! This will help to support others who are fighting this disease.

Please visit our website for an update on all our current supporters' challenges and for the links to support them.



THE BIG THANK YOU EVENT

Claire Charlton organised her Big Thank You event at Home & Botanic nightclub in Cheltenham to raise money for two charities close to her heart, Cobalt and MacMillan. The FUNdraising event included music, a fashion show by Bodega, a raffle and an auction.

Claire said, "This event is my way of thanking everyone who has helped me, and hopefully raising funds to help these charities continue their amazing work for other patients".

Cobalt provided the diagnostic scans that Claire went through, including CT, MRI and PET scans; whilst Macmillan helped to fund a Clinical Nurse Specialist in Oncology, and the Next Steps programme, which helped Claire with post-surgery physiotherapy and personal training.

A special thank you to Jane and Mark Shorting and the team at Home & Botanic nightclub for their generous support of this event.



Cobalt and LINC (Leukaemia and Intensive Chemotherapy) charities teamed up for an afternoon tea and garden party kindly hosted at the home of Jackie and Laurence Llewelyn-Bowen. The event raised almost £3,000 and was kindly supported by catering company Creed and local soft drinks company Bottlegreen. Funds raised will enable both LINC and Cobalt to continue their work supporting local people who rely on their services.



Billy's Vintage Tractor Weekend

Cheryl and her husband Bill, along with friends and family, raised £711 from a vintage tractor weekend for Cobalt.



The Far Open Trail in the Forest of Dean

To raise money for Cobalt, Elaine Jackson turned her kitchen into an art gallery for the duration of the July trail, showcasing the local artist's work and serving refreshments.

VOLUNTEERS ARE AT THE HEART OF WHAT WE DO



Congratulations to Janet Peacey and to Colin Ralph who were both awarded the Fred Hannah Memorial Award for outstanding volunteer contribution at our Thank you Event for volunteers held at Dean Close School in August.



A special thank you to Irene Finlayson and Jenny Miller, our 'Talks Ambassadors' who have recently retired from their volunteer roles. We are extremely grateful to them for helping to raise awareness about the work of our charity, by delivering dozens of talks to local groups and organisations.

WANT TO KNOW MORE?

Are you interested in volunteering?

Please contact Kirsty Bradbury, our Fundraising Engagement Officer, on 01242 535922 or by email kirsty.bradbury@cobalthhealth.co.uk

"There are lots of ways to support the work of our charity. Whether you want to meet new people, use your expertise, or develop new skills; get involved and we will ensure that you have a rewarding time. Just give me a call." – Kirsty Bradbury.



Gifts in Wills

Gifts in wills are important to Cobalt as they allow us to keep investing in the best latest diagnostic scanning equipment available.

One in two of us will get cancer in our lifetime. As gifts in wills account for over half of Cobalt's fundraising income, they directly help to ensure people have access to the latest diagnostic equipment and treatment plan, ultimately helping to save lives.

After taking care of family and friends, leaving a gift to a charity in your will is the ultimate way to leave a lasting positive impact on future generations. Gifts don't have to be large to make a difference through our work.

The family of the late Pamela Gay chose for her legacy gift to be used to purchase a new contrast injector for our mobile MRI scanner at Gloucester Royal Hospital. By including Cobalt in her will, Pamela is helping patients today and future generations to access a timely and accurate diagnosis.

Cobalt has teamed up with wills specialist Guardian Angel, to enable our supporters to make a simple will at no charge.

When our special supporter, Phillip Pinchin, recently found himself getting ready to set off for a huge personal

and physical challenge, he decided to use our Guardian Angels service to make his first will and kindly chose to include a gift to Cobalt. Phillip said, "Prior to leaving for Nepal this year, a friend encouraged me to write a will. As I was attempting to climb the fourth-highest mountain in the world (Lhotse 8516m), this seemed like a reasonable suggestion! A strange sense of relief was felt to finally have a will, I knew that those whom I wished to receive money would do so and that Cobalt would have a legacy they might miss should my estate be divided by a third party. Writing a will is certainly one of those life moments; that said, it's incredibly easy and gives great satisfaction when accomplished".

Everyone who makes this thoughtful commitment is helping to ensure Cobalt can continue to be there for everyone who needs our services in the future. We are so grateful to all the donors and their families for these special gifts.

If you would like more information about leaving a gift in your will to Cobalt, our Guardian Angel will service, or if you are happy to let us know your intent or share your story about why you have included a gift to the charity in your will, **please contact our Legacy Officer, Helen Tomes by calling 01242 535922 or emailing helen.tomes@cobalthhealth.co.uk**

DATES FOR YOUR DIARY



The Big Give Christmas Challenge 2023

Your chance to double your donation (at no extra cost) to support teenagers and young adults with cancer.

See page 11 for more information.



09:30 - 12:30
OR
13:30 - 16:30

Christmas Wreath Making Workshop

Find inspiration and learn new skills by creating a Christmas wreath using seasonal foliage for either your door or to decorate your Christmas table.



Coln Valley Village Hall, Coln Rogers GL54 3LA
Tickets £75 including all materials. Book online at: www.colnchristmaswreathmaking.eventbrite.com

The funds raised from both of these wreath making events will help fund Breast Cancer Research Nurses supported by Cobalt and based at Thirlestaine Breast Centre, Cheltenham.

Rare Plant Fair and Open Garden at The Old Rectory, Quenington

Browse the specialist plants, the beautiful garden and enjoy homemade refreshments all in aid of Cobalt. **£6 per adult, children under 16 free. The Old Rectory, Quenington Gloucestershire, GL7 5BN**



We need your used Christmas cards

We will be accepting donations of used Christmas cards between Wednesday 3rd January to Monday 15th Jan 2024. Please visit www.cobalthhealth.co.uk for more information

Together we can make a difference

Every year, thousands of local people need life-changing scans to give their medical teams information which is crucial in determining the best treatment for them. We want you to know that we are determined to do all we can for our patients, now and in the future.

Please make a gift today

Full name:

Address:

Postcode:

Email address:

Telephone number:

Your gift

I would like to support:

- Equipment appeal
- Breast Cancer Nurses
- Teenagers and Young Adults with Cancer Nurse Specialist
- Prostate scans
- Where the need is greatest

My chosen amount: £.....
(please make cheques payable to Cobalt)

- Please save the postage, a thank you letter is not necessary
- Please email me with an acknowledgment (please provide email address above)
- I would like to set up regular direct debit donations, please send me details
- Please contact me about setting up a tribute fund
- Please send me details of how to leave a gift in my will

Are you donating in memory of a loved one? Please tell us more and in whose memory you are donating:

.....
.....

- I would like to buy _____ number of Cobalt's 2024 Calendar and I enclose a cheque (payable to Cobalt) for £12 for each calendar (includes p&p)
- I would like to order _____ packs of 20 assorted upcycled Christmas Cards and enclose a cheque (payable to Cobalt) for £11 for each pack (includes p&p)
- I would like to order _____ packs of 40 assorted upcycled Christmas Cards and enclose cheque (payable to Cobalt) for £19 for each pack (includes p&p)

For larger orders please call the Fundraising Office on 01242 535922.

giftaid it **Boost your donation by 25p per £1 donated**

- Yes, I would like Cobalt to treat all donations I have made for the four years prior to this year and all donations I make from this date until I notify you otherwise, as Gift Aid donations. I confirm I have paid or will pay an amount of Income Tax or Capital Gains Tax to cover the amount that all charities will reclaim on my donations in the tax year, and it would be my responsibility to pay any difference.
- No, I am not a UK tax payer

Thank you!

Please return this form to: Cobalt, Linton House, Thirlestaine Road, Cheltenham, Gloucestershire, GL53 7AS.

You can also make a single donation online at cobalthhealth.co.uk or by calling us on 01242 535922.

If you are eligible for Gift Aid, we can maximise your donation by 25%.

Regular Giving – regular donations are extremely important to us and make a really big difference to our patients every day. By choosing to give a regular monthly donation, you will be helping us to plan ahead and make long-term improvements for our patients and their families.

Please visit the Cobalt website and complete the Charities Aid Foundation (CAF) Bank online donation form. If you would like us to send you the form please call 01242 535922.

✕ @cobaltfr

f @cobaltsupporters

📷 @cobaltsupporters

For further information about how we protect your information please view our privacy policy at www.cobalthhealth.co.uk You can change you contact preferences, request a copy of our privacy policy, or ask a question by contacting the fundraising team on 01242 535922 or fundraising@cobalthhealth.co.uk

www.cobalthhealth.co.uk

Registered Charity No: 1090790

